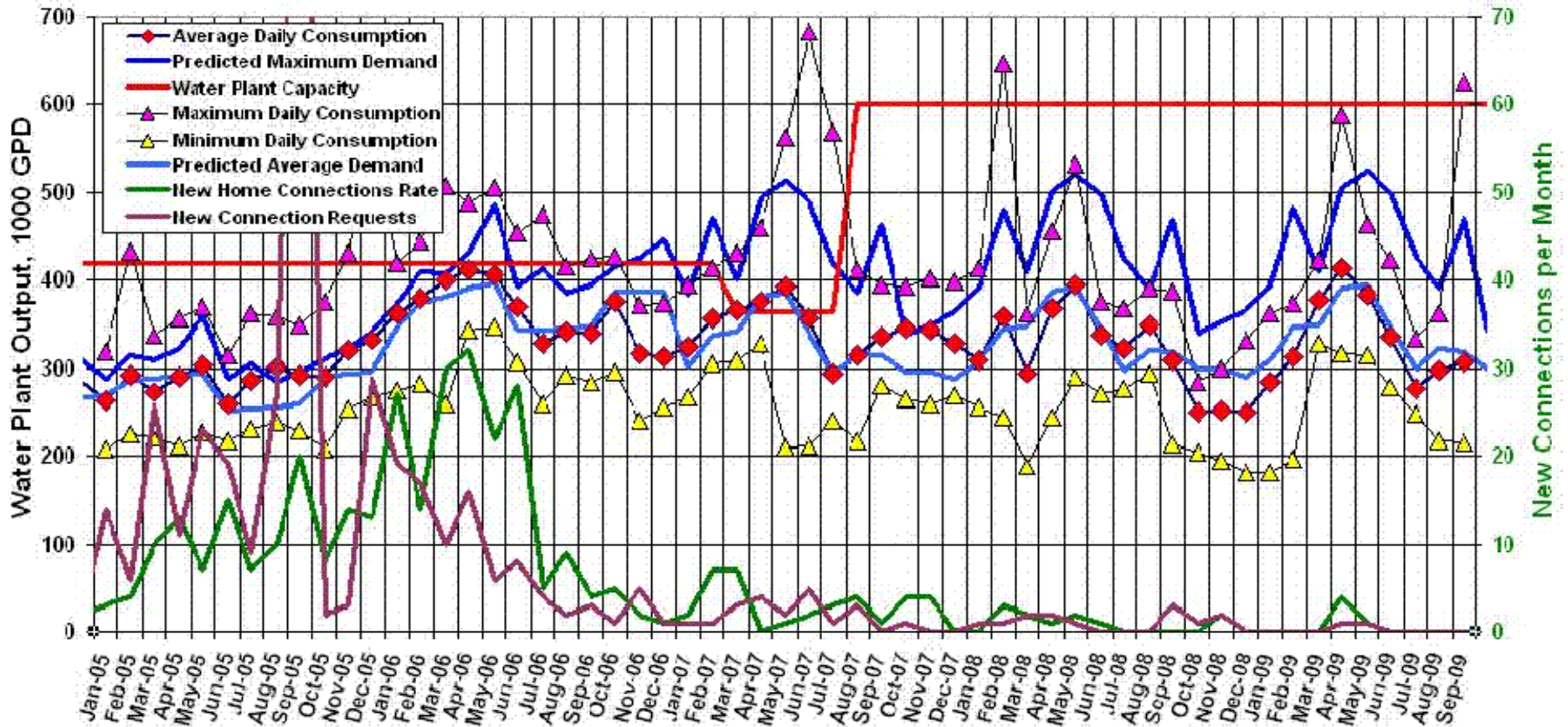


Port LaBelle Water Consumption

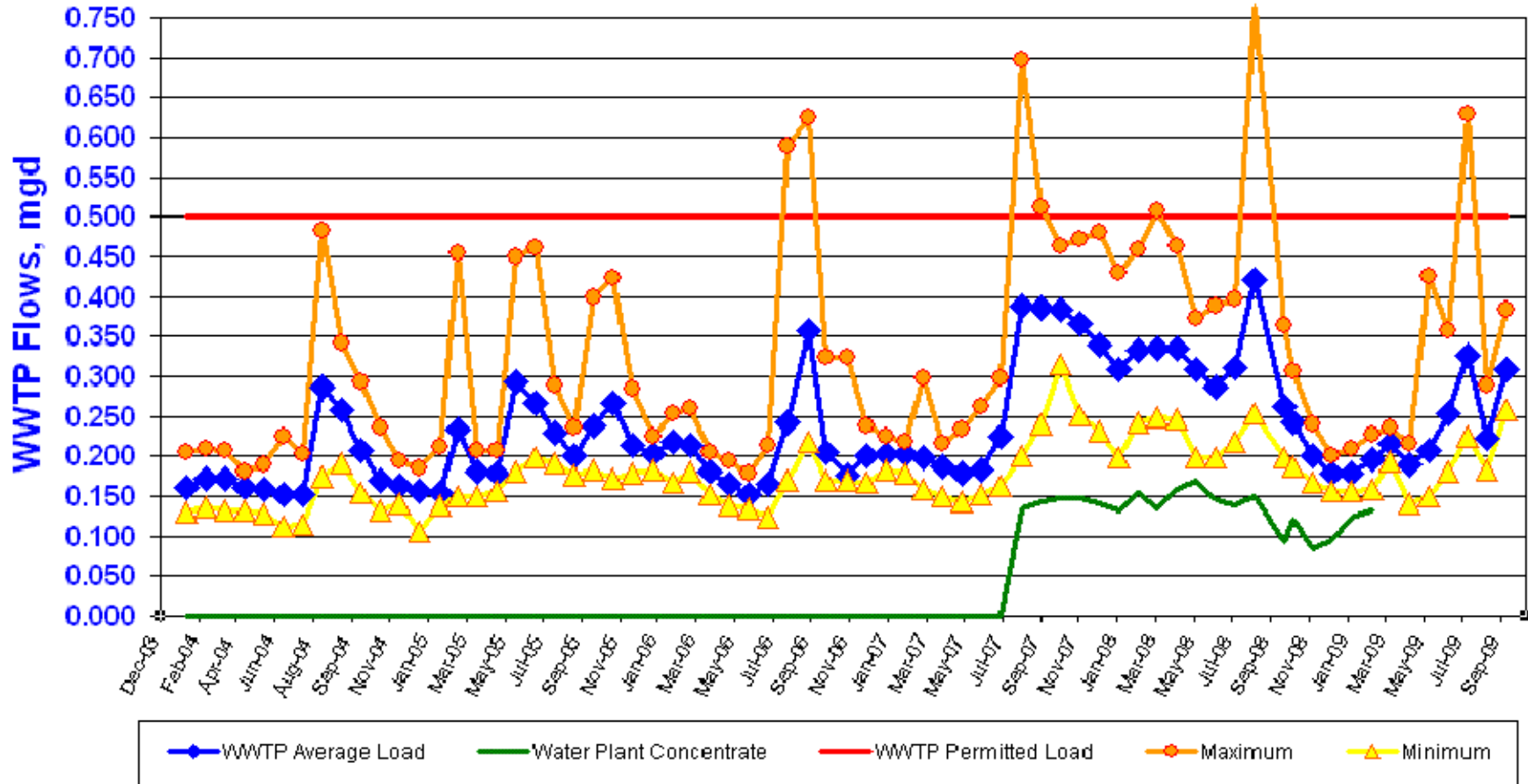


Average water consumption was **276,000** gpd in **July**, **297,000** in **August**, and **307,000** in **September**. Peak water use was **335,000** gpd in **July**, **363,000** in **August**, and **626,000** in **September**.

Water storage tank is at **18.1** feet or **85%** of maximum capacity. The minimum tank level in **September** was **15.4** feet or **73%** of capacity.

0 new connections were been made from **June to September** with **0** new requests. Our current backlog is **64** connections. Paid connections total is **1585**. The number of active, flowing accounts is **1521**.

Waste Water Treatment Plant Load



Average wastewater load was **326,000 gpd (65% of permitted capacity)** in **July**, **223,000 gpd (45% of permitted capacity)** in **August**, and **309,000 gpd (62% of permitted capacity)** in **September**.

Peak wastewater load was **629,000 gpd (126% of permitted capacity)** in **July**, **289,000 gpd (58% of permitted capacity)** in **August**, and **259,000 gpd (77% of permitted capacity)** in **September**.

For the months **July-September**, wastewater treatment load has been **98%** of potable water delivery to customers. **PLUS** wastewater treatment is normally **55%** of water treatment plant output, excluding months of probable stormwater infiltration.