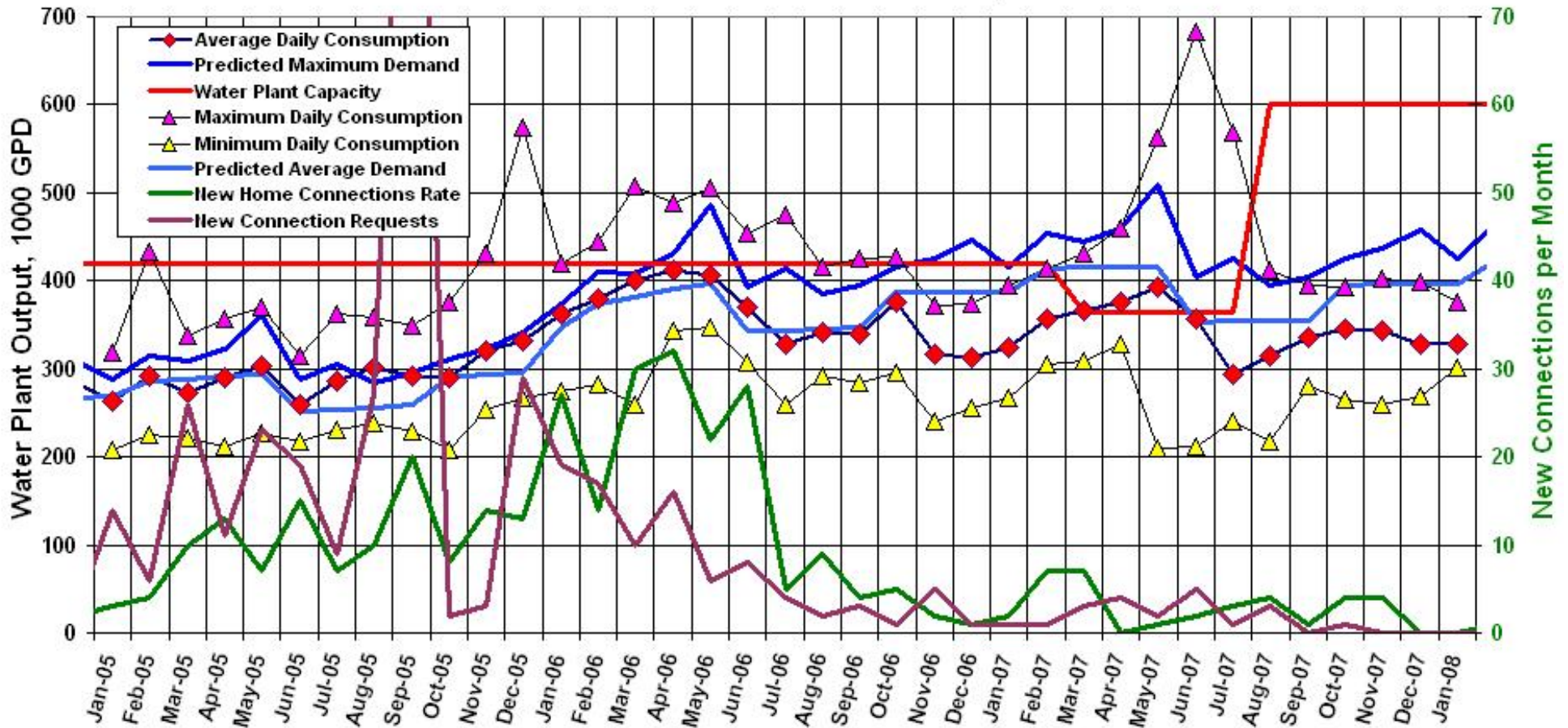


Port LaBelle Water Consumption

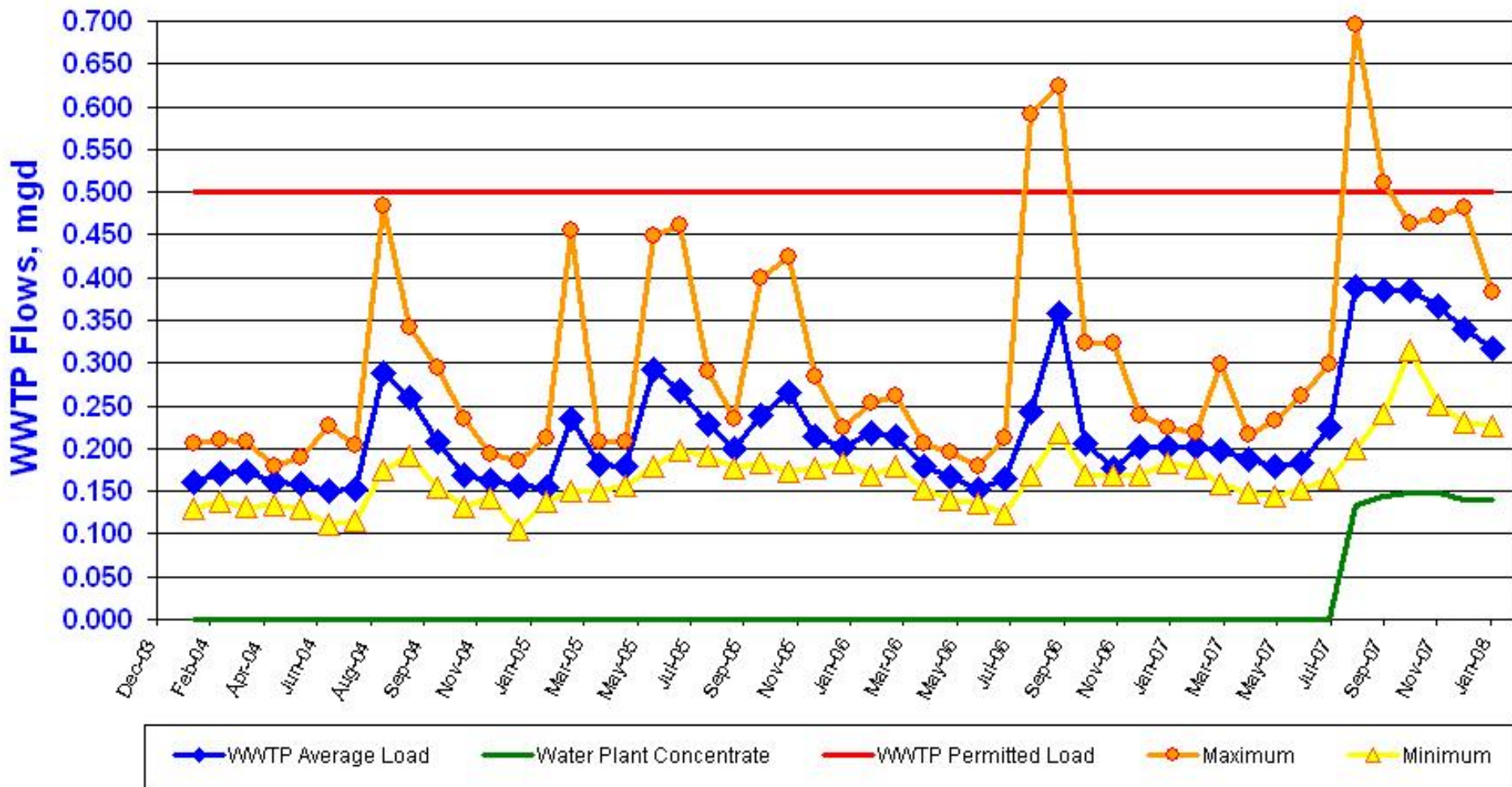


Average water consumption 327,000 gpd in December and 327,000 in January. Peak water use was 398,000 gpd in December and 377,000 in January.

Water storage tank is at 16 feet or 76% of maximum capacity. The minimum tank level in December was 16 feet or 76% of capacity. PLUS no longer has to operate beyond normal office hours to meet demand.

0 new connections were been made in December with 0 new requests. Our current backlog is 76 connections. Customers = 1590.

Waste Water Treatment Plant Load



Average wastewater load was 340,000 gpd (68% of permitted capacity) in both December and 316,000 gpd (63% of permitted capacity) in January.

Water treatment plant concentrate load was 327,000 mgd (28% of the total WWTP permitted capacity) in December and January.