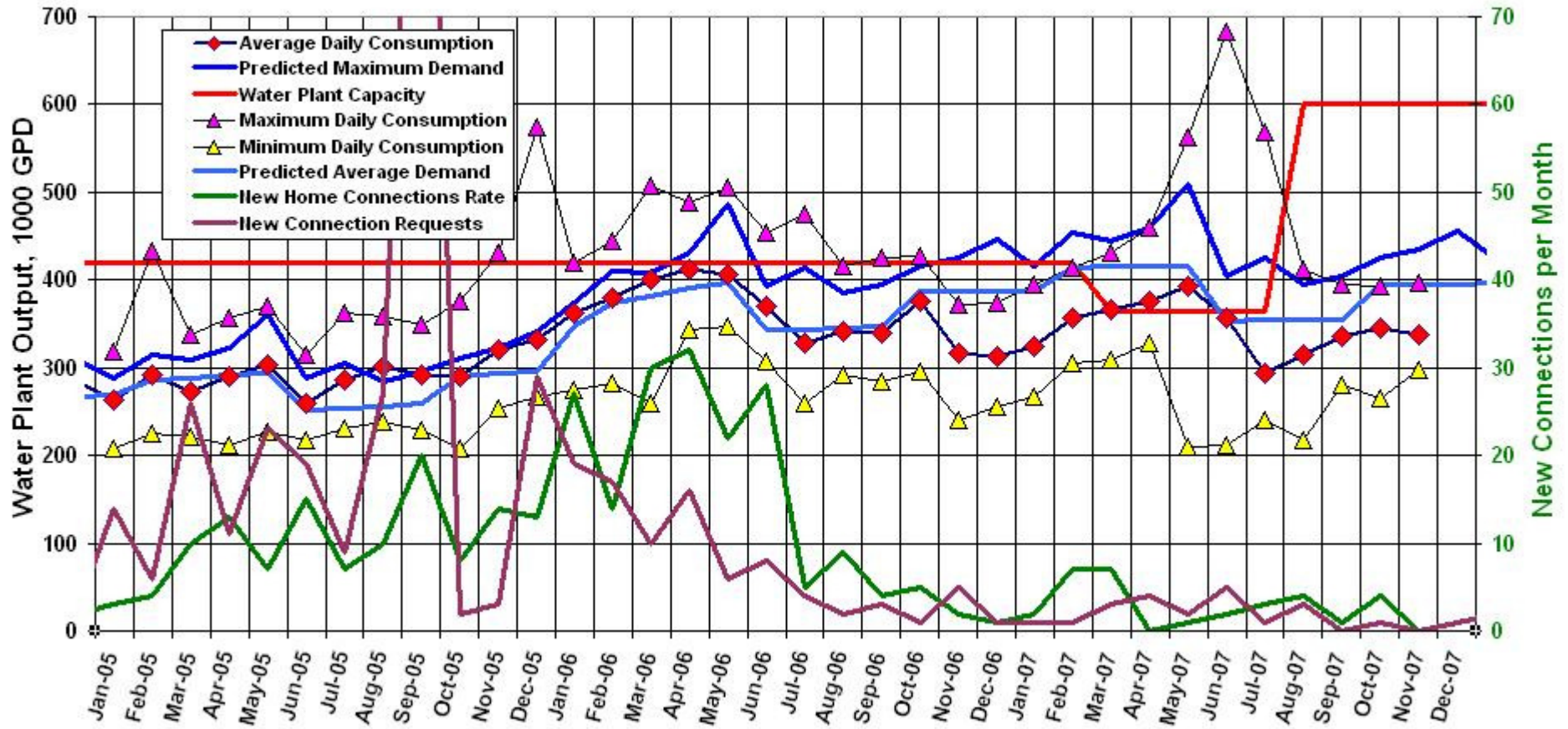


## Port LaBelle Water Consumption

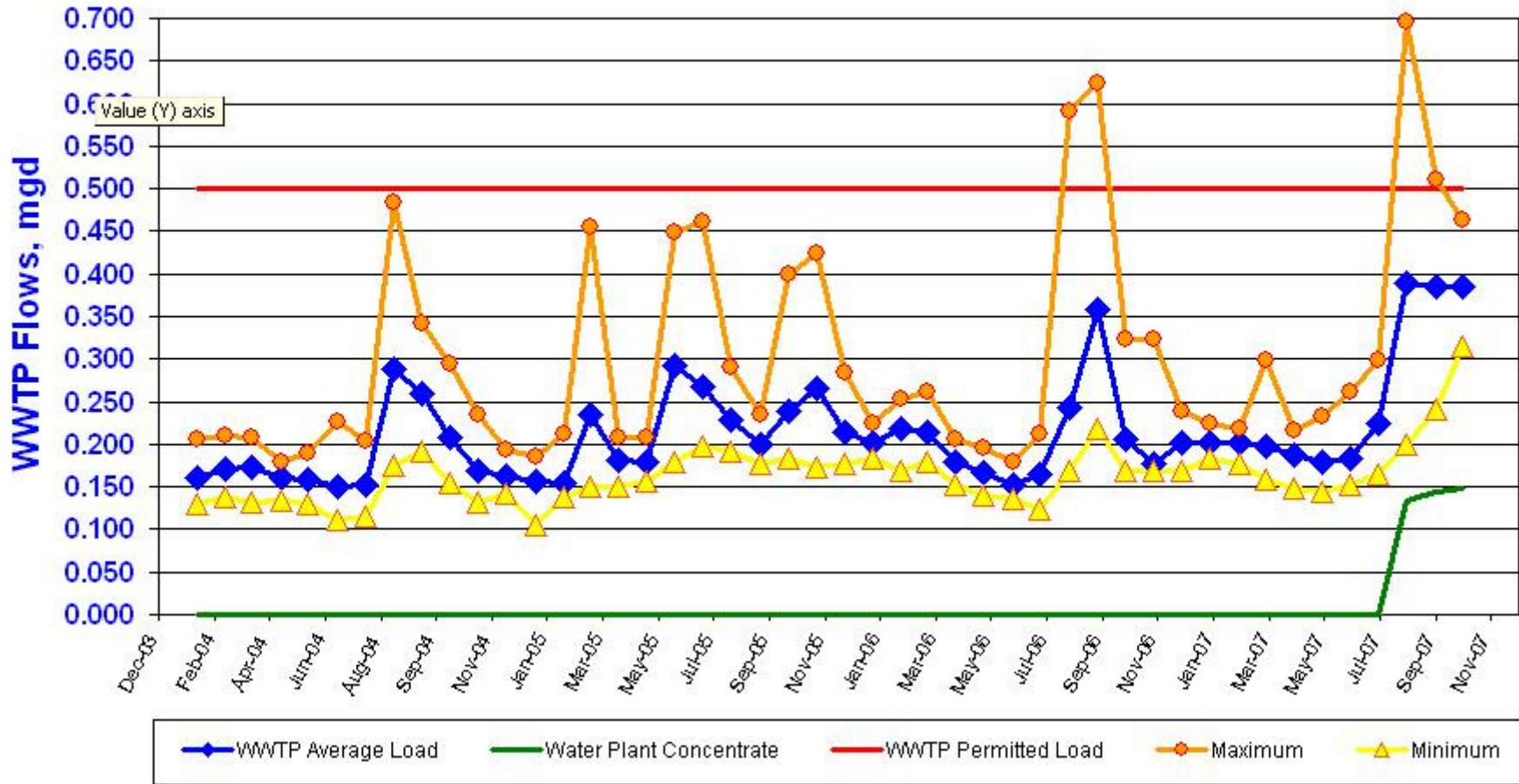


**Average water consumption 336,000 gpd in September and 344,000 in October. Peak water use was 394,000 gpd in September and 393,000 in October.**

**Water storage tank is at 19 feet or 90% of maximum capacity. The minimum tank level in October was 13 feet or 62% of capacity.**

**4 new connections were been made in October with 1 new request. Our current backlog is 80 connections. Customers = 1590.**

### Waste Water Treatment Plant Load



Average wastewater load was 385,000 gpd (77% of permitted capacity) in both September and October.

Water treatment plant concentrate load was 144,000 mgd (29% of the total WWTP permitted capacity) in September and 148,000 (29% of the total WWTP permitted capacity).