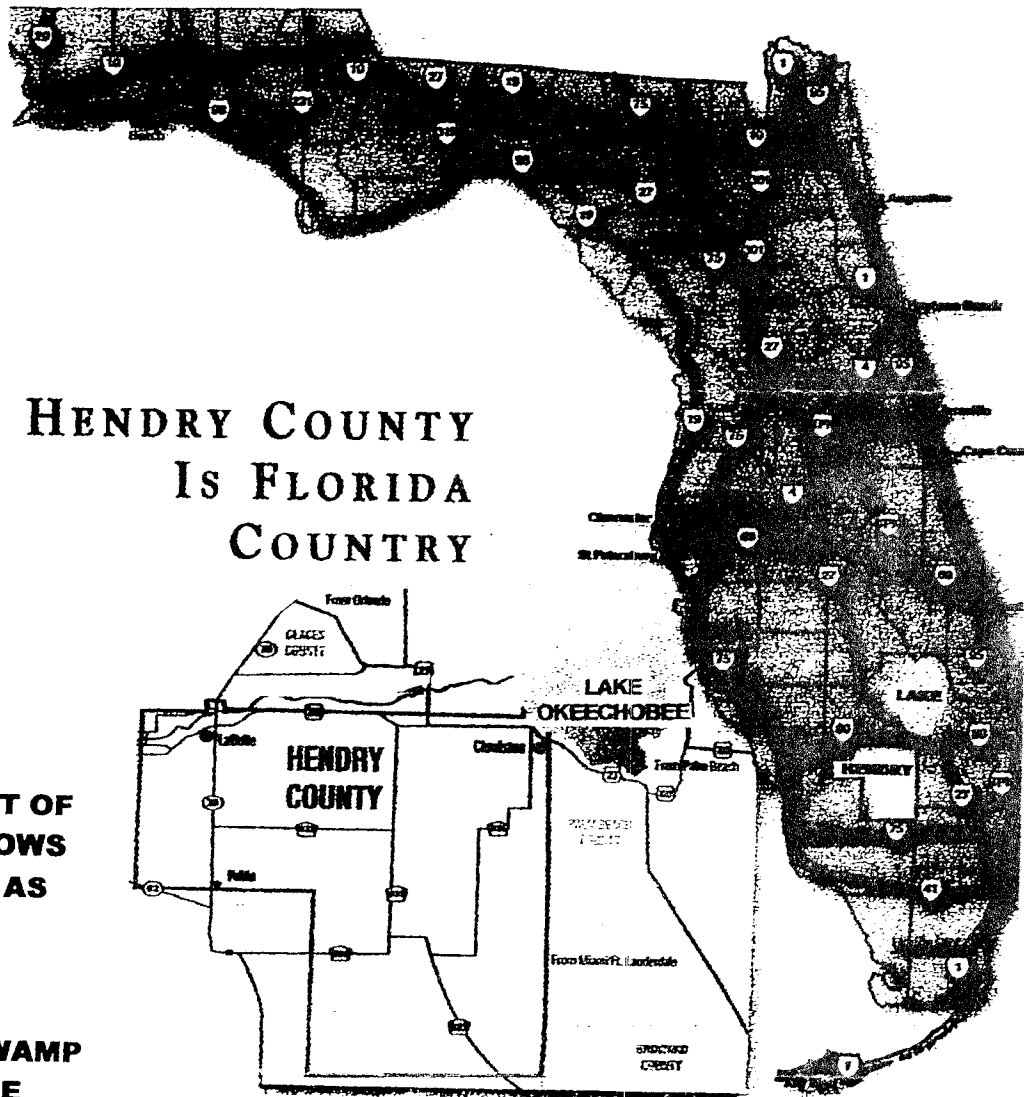


NEWLETTER#41



SABAL PALM
(FLORIDA STATE TREE)
YOU MAY KNOW IT AS
HEARTS OF PALM
HERE IT'S

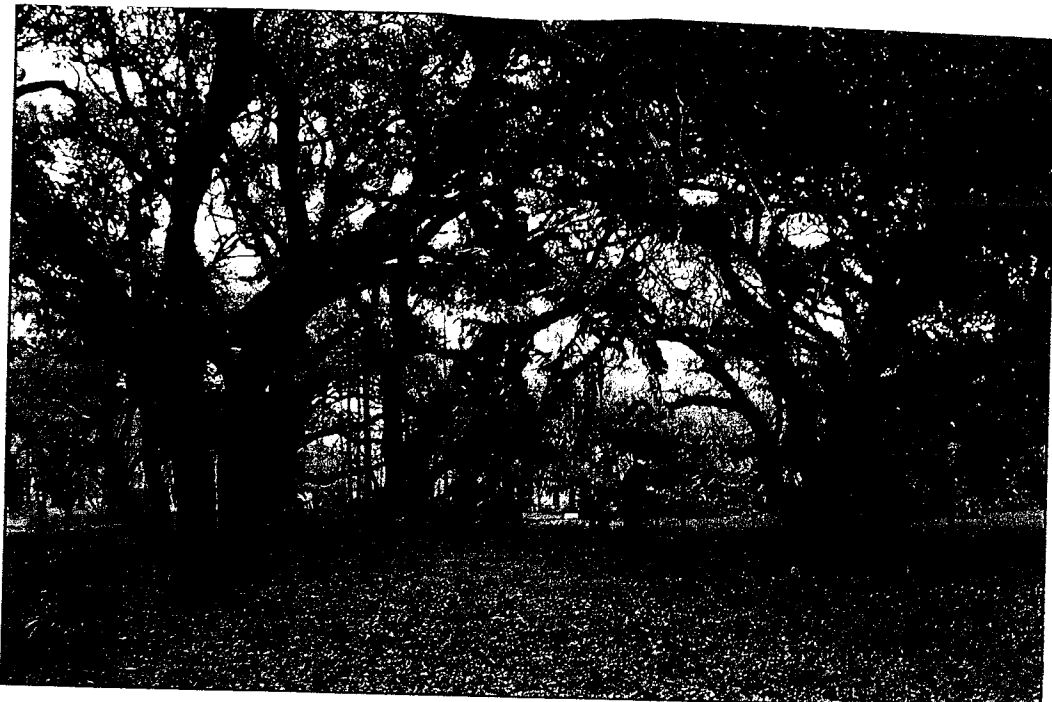
SWAMP CABBAGE
IS AN OLD-TIME FLORIDA
FAVORITE. A VEGETABLE
OBTAINED FROM THE HEART OF
THE CABBAGE PALM. IT GROWS
WILD ALL OVER THE STATE AS
AN INDIVIDUAL PLANT OR
CLUSTER TOGETHER IN
HAMMOCKS. WHEN
CUTTING THIS TREE FOR SWAMP
CABBAGE JUST REMOVE THE
CENTER CORE OR THE (HEART).
THIS HEART OR CORE WILL WEIGH
FROM 10 TO 15 POUNDS. AFTER IT
IS TRIMMED AND SEVERED FROM
THE TRUNK IT WILL WEIGH FROM
5 TO 10 LBS AND IS READY TO COOK.



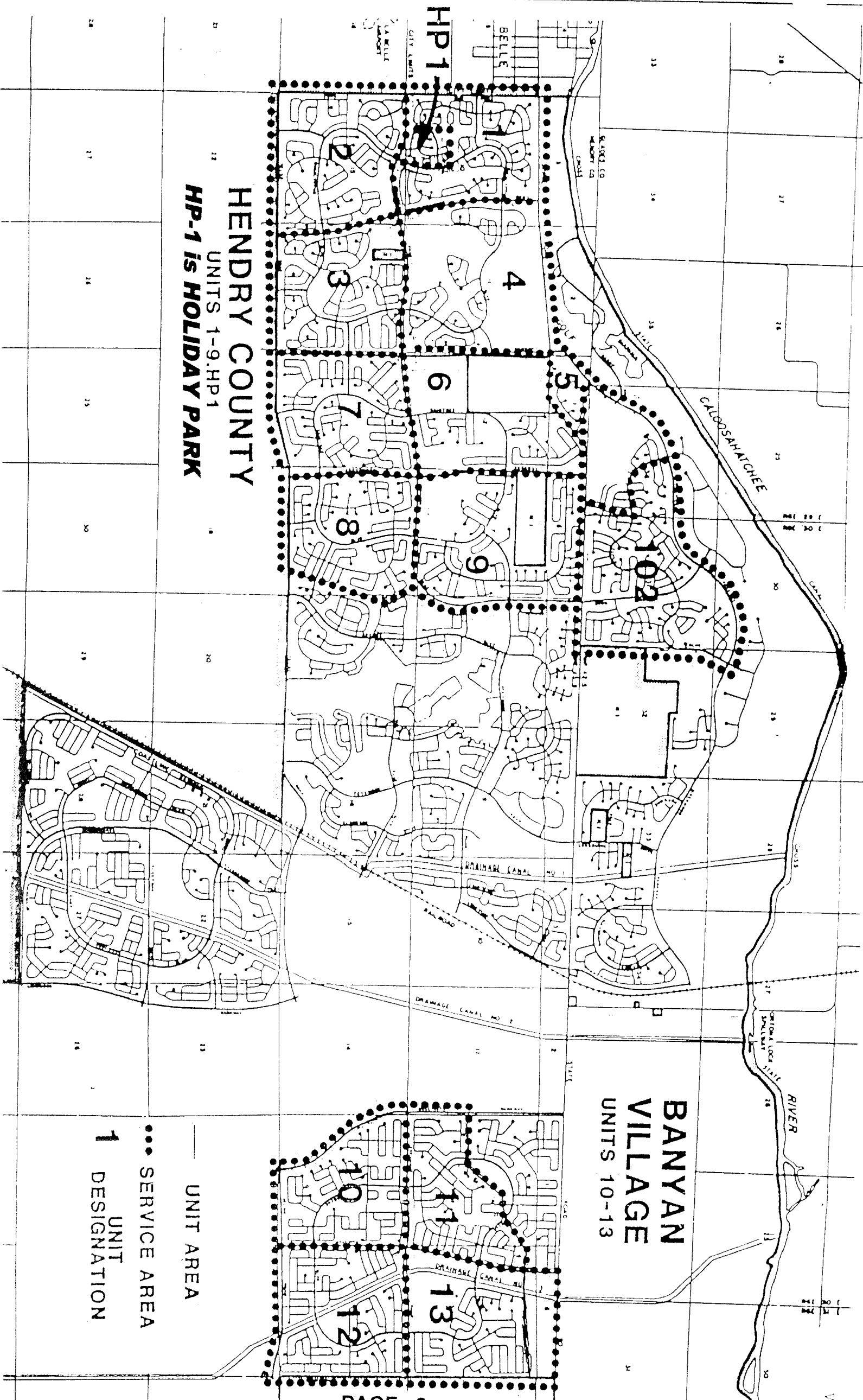
HENDRY COUNTY
IS FLORIDA
COUNTRY

HENDRY COUNTY ECONOMIC DEVELOPMENT COUNCIL, INC.
250 NORTH LEE STREET OR P.O. BOX 2518
LABELLE, FL 33975
863-675-6007 • FAX 863-675-8696
WEBSITE WWW.HENDRYCOUNTYEDC.COM • E-MAIL HCEDC@AOL.COM

THIS PICTURE OF THE LOCAL GAIANT OAK TREES WAS TAKEN A FEW YEARS AGO WHEN THE GOLF COURSE WAS STILL OPEN.



LaBelle-Port LaBelle butts up against LaBelle so the East side of LaBelle is the West side of Port LaBelle but in the County not the city. LaBelle is known as "The City of Oaks" and is the seat of government for Hendry County. Rich in history, the community grew along the banks of the Caloosahatchee River and is famous for the stately oak trees with Spanish moss hanging from the trees.



HENDRY COUNTY
 UNITS 1-9, HP 1
HP-1 is HOLIDAY PARK

BANYAN VILLAGE
 UNITS 10-13

— UNIT AREA
 ●●● SERVICE AREA
1 UNIT DESIGNATION